

Standard Lockbolt Steel

Standard Lockbolts offer high shear and tensile strength, excellent vibration resistance and sealing properties. Quick and simple to install, Standard Lockbolts provide consistent high uniform clamp force with every installation. C6L Lockbolts are available with standard or flanged collars.

Material: Pin: Carbon Steel Collar: Low Carbon Steel

Finish: Pin: Zinc Plated and clear passivate Collar: Zinc, clear passivate and lubrication



Pin Diameter (nom)	Part Code	Hole mm	Grip Range (with std collar) mm	A (nom) mm	B (max) mm	C (max) mm	D (nom) mm
6.4 1/4"	C6LB-0802		1.6-4.8				1.6
	C6LB-0803		3.2-6.4				3.2
	C6LB-0804		4.8-7.9				4.8
	C6LB-0806		7.9-11.1				7.9
	C6LB-0808		11.1-14.3				11.1
	C6LB-0810	6.6	14.3-17.5	6.4	12.0	3.9	14.3
	C6LB-0812		17.5-20.6				17.5
	C6LB-0814		20.6-23.8				20.6
	C6LB-0816		23.8-27.0				23.8
	C6LB-0818		27.0-30.2				27.0
	C6LB-0820M		28.6-34.9				28.6
	C6LB-0822		33.3-36.6				33.3

Collar Diameter (nom)	Collar Type	Part Code	A (max) mm	B (max) mm	C (max) mm
6.4 1/4"	Standard	2LC-R8G	10.1	8.2	-
	Flanged	3LC-2R8G	10.1	9.5	13.2

PERFORMANCE GUIDE - These figures represent the minimum fastener shear and tensile strength values with the use of a full collar.

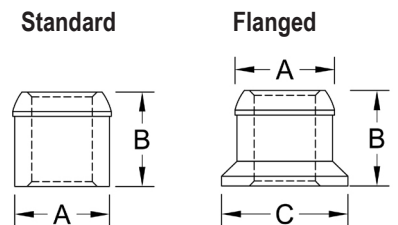
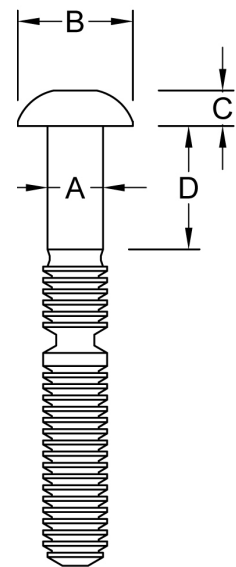
Diameter	Shear KN	Tensile KN
6.4 1/4"	3050	3000

Pins with other grip ranges and head styles are available on request.
Detailed dimensions are available on request.

Dimensions and specifications are subject to change without notice. Check with your distributor for the latest data sheet.

The test data provides approximate strength values averaged in multiple tests in various materials and thicknesses.

We recommend testing your application when an exact strength figure is required, or the load to be applied comes close to the published data.



When using flanged Collars the max grip is reduced by the flange thickness (6.4mm = 2.0mm)