

Standard Lockbolt Aluminium

Standard Lockbolts offer high shear and tensile strength, excellent vibration resistance and sealing properties. Quick and simple to install, Standard Lockbolts provide consistent high uniform clamp force with every installation. C6L Lockbolts are available with standard or flanged collars.

Material: Pin: Aluminum 2024 Collar: Aluminium 6061

Finish: Pin: Iridate Collar: Self colour with lubrication



Pin Diameter	Part Code	Hole mm	Grip Range (with full collar) mm	A mm	B mm	C mm	D mm
6.4 1/4"	C6LB-0804AL	6.6	4.8-7.9	6.4	12.0	3.9	4.8
	C6LB-0805AL		6.4-9.5				6.4
	C6LB-0806AL		7.9-11.1				7.9

9.5 3/8"	C6LB-C1206	9.8	6.4-12.7	9.6	18.0	6.3	6.4
	C6LB-C1208		9.50-16.0				9.5
	C6LB-C1210		12.7-19.0				12.7
	C6LB-C1212		15.9-22.2				15.9
	C6LB-C1216		22.2-28.6				22.2

Collar Diameter	Collar Type	Part Code	A mm	B mm	C mm
6.4 1/4"	Standard	2LC-F8	10.1	8.2	-
	Flanged	3LC-F8	10.1	9.5	13.2
9.5 3/8"	Standard	2LC-F12	14.9	11.9	-
	Flanged	3LC-F12	15.2	13.3	19.7

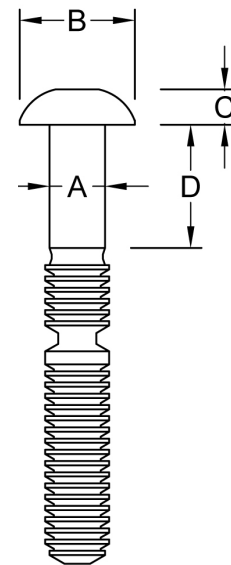
PERFORMANCE GUIDE - These figures represent minimum fastener shear and tensile strength values with the use of a full collar.

Diameter	Shear KN	Tensile KN
6.4 1/4"	8.3	8.0
9.5 3/8"	18.5	18.5

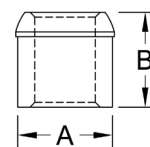
Pins with other grip ranges and head styles are available on request.
Detailed dimensions are available on request.

Dimensions and specifications are subject to change without notice. Check with your distributor for the latest data sheet.
The test data provides approximate strength values averaged in multiple tests in various materials and thicknesses.

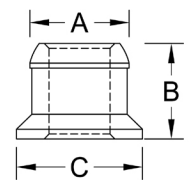
We recommend testing your application when an exact strength figure is required, or the load to be applied comes close to the published data.



Standard



Flanged



When using flanged Collars the max grip is reduced by the flange thickness (4.8mm = 1.6mm, 6.4mm = 2.0mm, 7.9mm = 2.4mm, 9.6mm = 3.2mm)