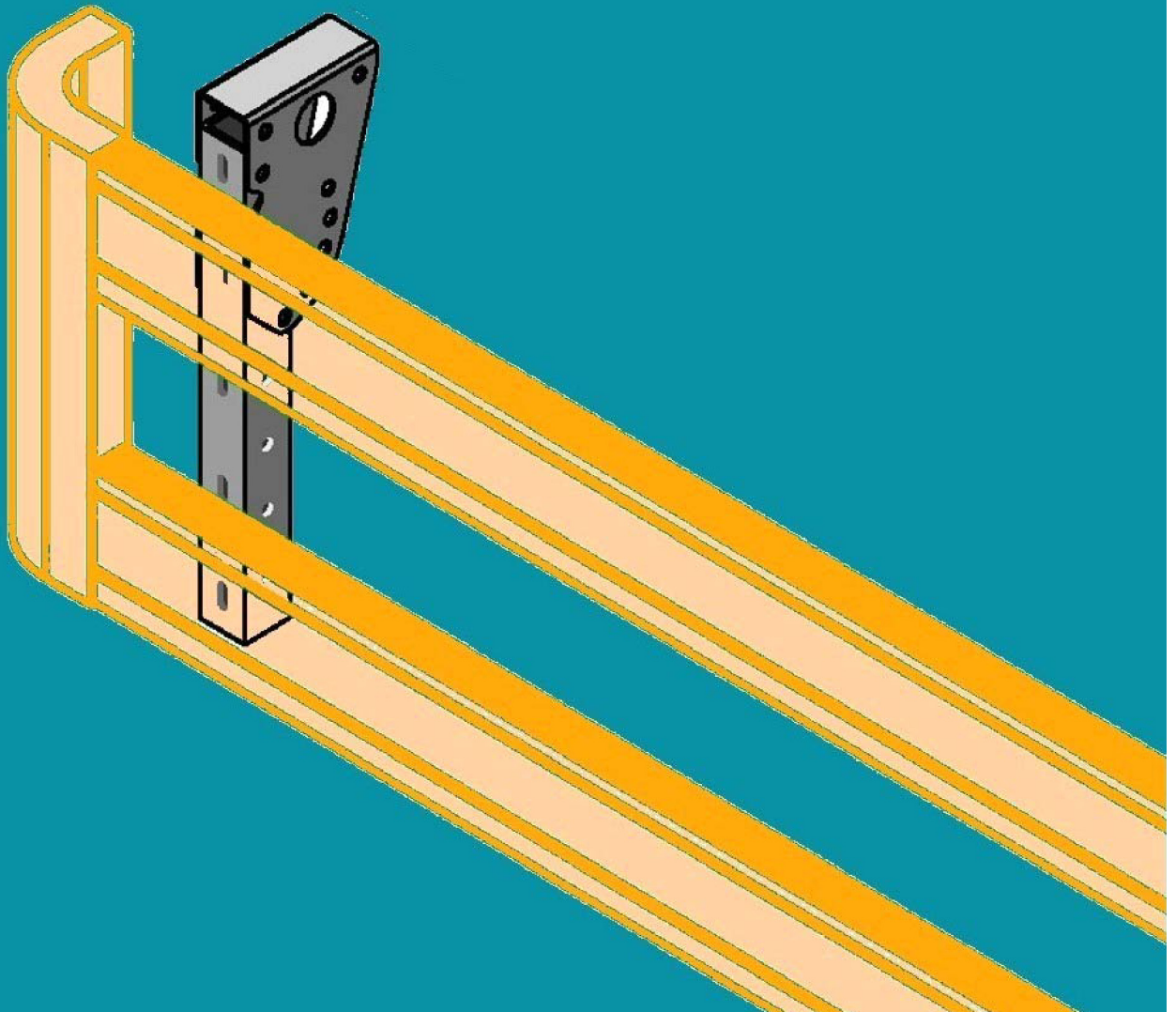


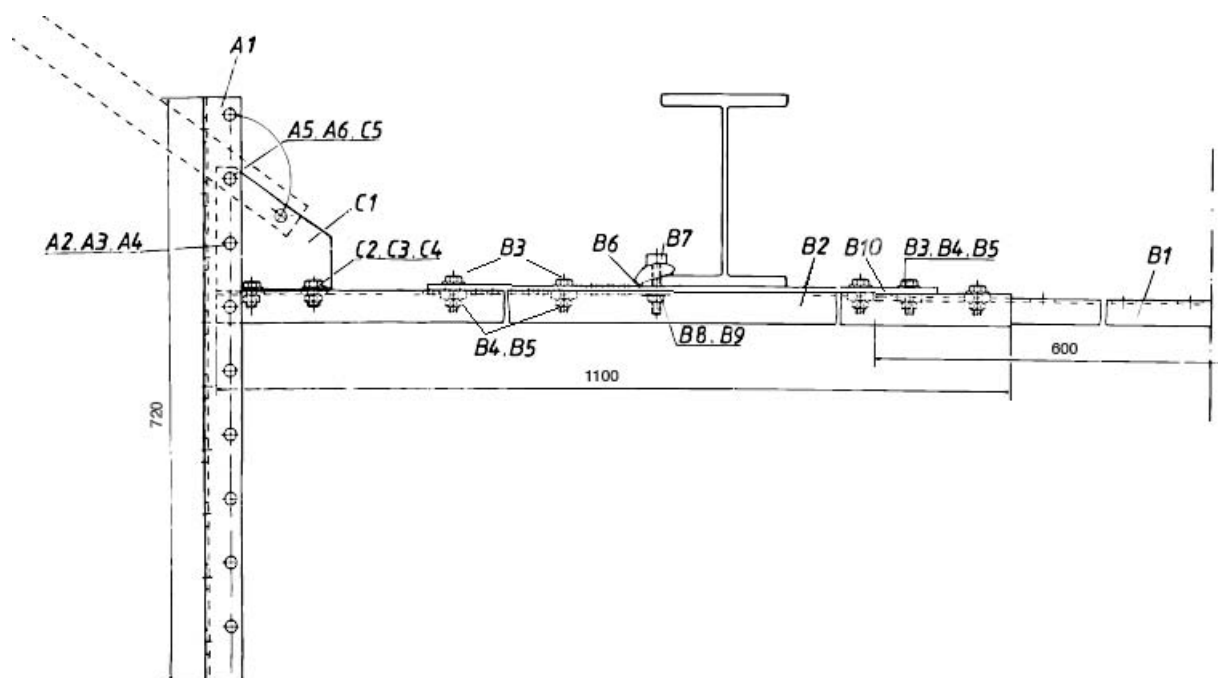
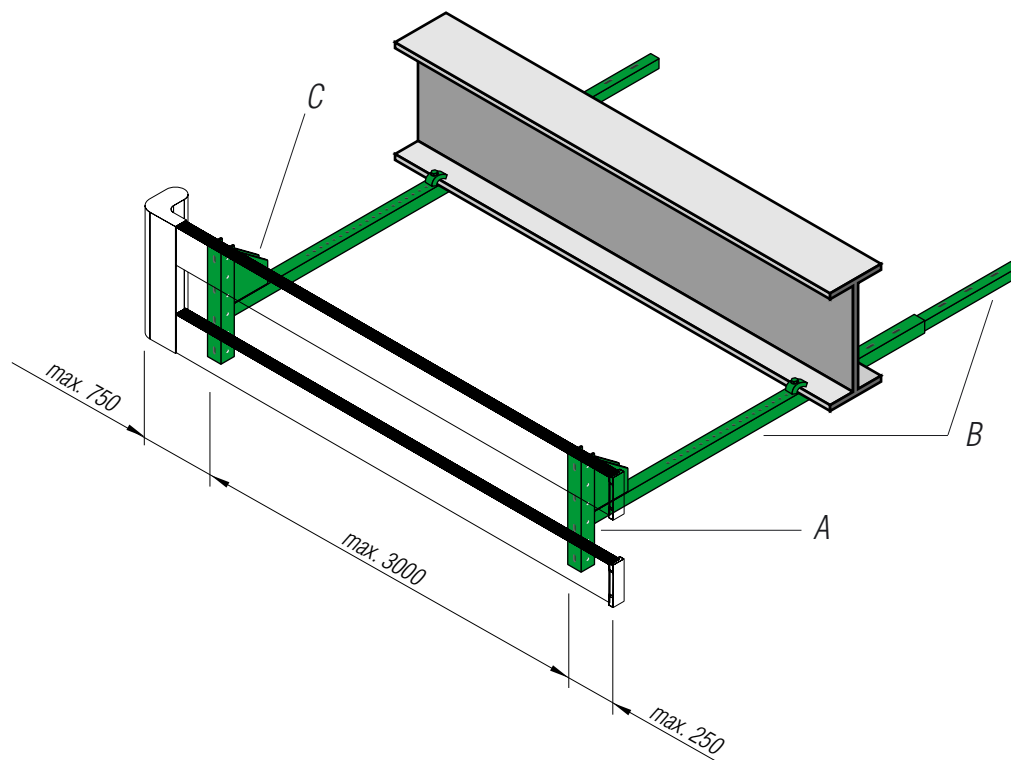
Distributed by
RIVTEC®

■ **SIDELINE** underrun systems



50.06.01.2
Construction elements
Side underrun systems
SIDELINE Type II

Type II



Technical specifications are for guidance only and without guarantee. Right to structural change reserved.

Side-protection device for commercial vehicles

Type II – fixing components

Layout: supports, components for fitting under the chassis, hinged

Complete equipment for 1 vehicle

Compo- nents	[Quantity]	Description	Weight [complete/kg]	Part No.
A	4	Vertical support	7.2	502 620
B	2	Horizontal rail	20.8	502 711
C	4	Support	5.6	502 820

Items supplied and spare parts

Position	[Quantity]	Description	Material	Dimensions [mm]	Norm	Part No.
----------	------------	-------------	----------	--------------------	------	----------

Vertical support (component A) Items supplied with each group of components

A 1	1	Vertical support	Steel, galvanized	U 52 / 44 / 2 x 720	–	–
A 2	1	Socket pin	Steel, galvanized	12 x 75	–	207 663
A 3	1	Security string	Plastic	200	–	230 399
A 4	1	Spring plug	Steel, galvanized	3,2	DIN 11024	–
A 5	1	Hexagon screw	Steel 8.8, galvanized	M 12 x 65	DIN 933	–
A 6	1	Locknut	galvanized	M 12	DIN 985	–

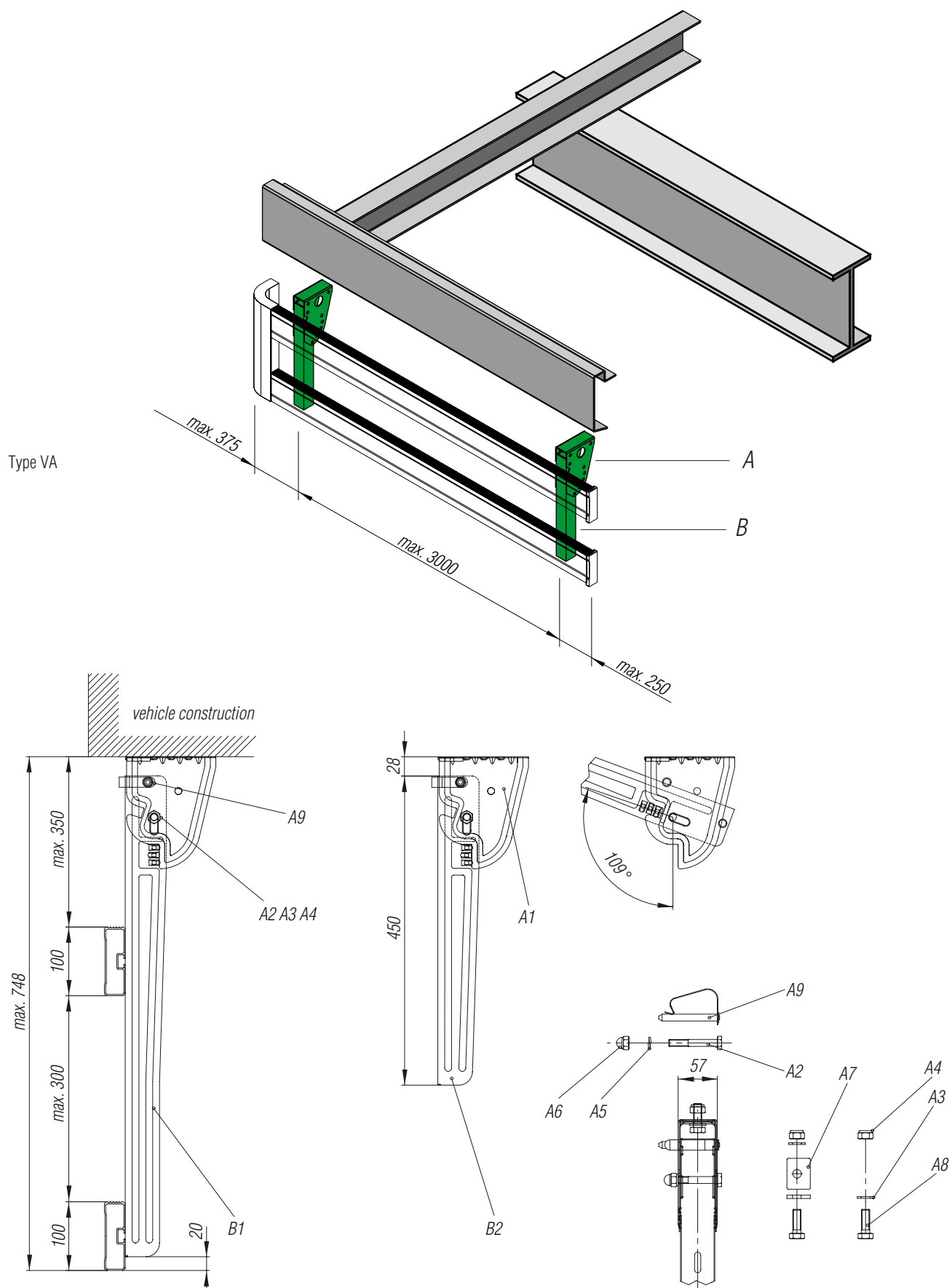
Horizontal rail (component B) Items supplied with each group of components

B 1	1	Horizontal centre rail	Steel, galvanized	U 35 / 42 / 3 x 600	–	–
B 2	2	Horizontal side rail	Steel, galvanized	U 45 / 45 / 4 x 1100	–	–
B 3	4	Hexagon screw	Steel 8.8, galvanized	M 10 x 25	DIN 933	–
B 4	8	Washer	galvanized	10.5 x 21 x 2	DIN 125	–
B 5	4	Locknut	galvanized	M 10	DIN 985	–
B 6	2	Clip	galvanized	–	–	502 903
B 7	2	Special screw	galvanized	M 12 x 70	–	502 905
B 8	2	Washer	galvanized	13 x 24 x 2.5	DIN 125	–
B 9	2	Locknut	galvanized	M 12	DIN 985	–
B 10	2	Reinforcing plate	galvanized	40 / 5 / 500	–	–

Support (component C) Items supplied with each group of components

C 1	1	Reverse bench	Steel, galvanized	U 63 / 152 / 3 x 140	–	–
C 2	2	Hexagon screw	Steel 8.8, galvanized	M 10 x 25	DIN 933	–
C 3	2	Washer	galvanized	10.5 x 21 x 2	DIN 125	–
C 4	2	Locknut	galvanized	M 10	DIN 985	–
C 5	2	Headed Bush	Plastic	–	–	502 638

SIDELINE Type VA – Stainless steel



Technical specifications are for guidance only and without guarantee. Right to structural change reserved.

Side-protection device for commercial vehicles
Type VA –Stainless steel– fixing components

Layout: suspension built-in, hinged

Complete equipment for 1 vehicle

Compo- nents	[Quantity]	Description	Weight [complete vehicle/kg]	Part No.
A	4	Reversing fixture, installation by screw	2.00	502 971
	4	Accessory bag for component A	1.04	502 978
B	4	U-profile vertical 700 mm	4.00	502 671
B	4	U-profile vertical 450 mm (alternative)	2.68	502 674

Items supplied and spare parts

Position	[Quantity]	Description	Material	Dimensions [mm]	Norm	Part No.
----------	------------	-------------	----------	--------------------	------	----------

Reversing fixture and accessory bag (component A) Items supplied with each group of components

A 1	1	Reversing fixture	Stainless steel	1.5 / 57 / 130 / 163	–	–
A 2	1	Hexagon screw	A 2 / 70	M 10 x 70	EN 24014	–
A 3	2	Washer	A 2	12	EN ISO 7090	–
A 4	2	Locknut	A 2 / 70	M 12	EN ISO 10511	–
A 5	1	Lock washer	A 2 / 70	10	DIN 127	–
A 6	1	Cap nut	A 2 / 70	M 10	DIN 1587	–
A 7	1	Plate	dacromet-coated	–	–	–
A 8	2	Hexagon screw	A 2 / 70	M 12 x 35	EN 24017	–
A 9	1	Spring plug bolt	galvanized	10 x 70	–	502 617

U-profile (component B) Items supplied with each group of components

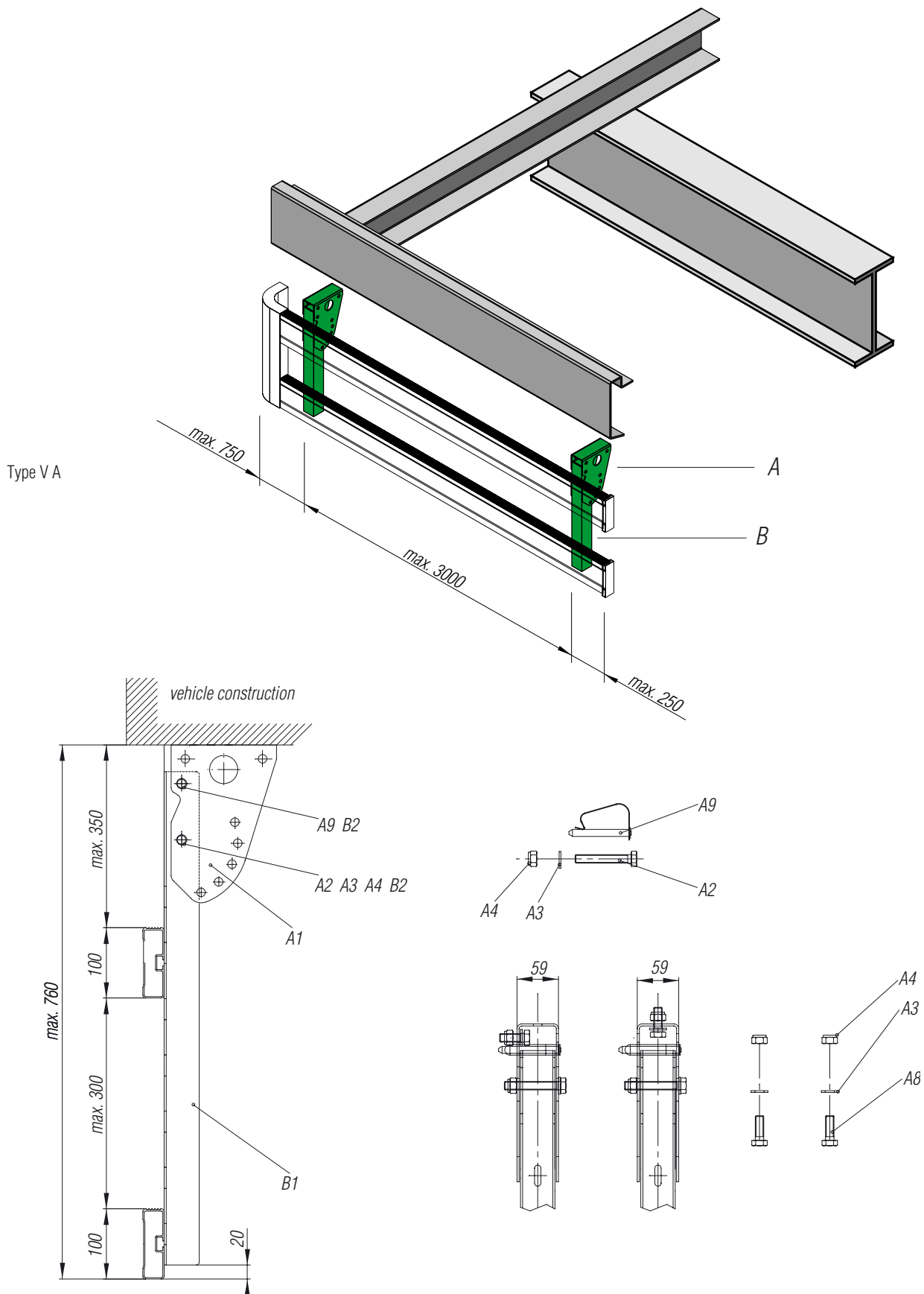
B 1	1	Grid profile 700 mm	Stainless steel	1.2 / 50 / 60 / 700	–	–
B 2	1	Grid profile 450 mm	Stainless steel	1.2 / 50 / 60 / 450	–	–

50.06.01.6

Construction elements

Side underrun systems

SIDELINE Type VA – Steel galvanized/black powder coated



Technical specifications are for guidance only and without guarantee. Right to structural change reserved.

SIDELINE Type VA – Steel galvanized/black powder coated**Side-protection device for commercial vehicles****Type VA –Steel– fixing components**

Layout: supports, suspension built-in, hinged

Complete equipment for 1 vehicle

Compo- nents	[Quantity]	Description	Weight [complete/kg]	Part No. Steel, galvanized	Part No. Steel, black powder coated
A	4	Reversing fixture	5.6	502 970	502 972
	4	Accessory bag for component A	–	502 979	502 979
B	4	U-profile vertical	8.8	502 670	502 672
	4	Accessory bag for component B	–	502 679	502 679

Items supplied and spare parts

Position	[Quantity]	Description	Material	Dimensions [mm]	Norm	Part No.
----------	------------	-------------	----------	--------------------	------	----------

Reversing fixture and accessory bag (component A) Items supplied with each group of components

A 1	1	Reversing fixture	Steel ¹	3 / 59 / 150 / 225	–	–
A 2	1	Hexagon screw	Steel 8.8, galvanized	M 12 x 80	EN 24014	–
A 3	6	Washer	Steel, galvanized	3 x 24 x 2.5	EN ISO 7090	–
A 4	3	Locknut	Steel, galvanized	M 12	EN ISO 10511	–
A 8	2	Hexagon screw	Steel 8.8, galvanized	M 12 x 35	EN 24017	–
A 9	1	Spring plug bolt	Steel, galvanized	12 x 90	–	502 615

U-profile and accessory bag (component B) Items supplied with each group of components

B 1	1	Snap-in profile	Steel ¹	3 / 50 / 50 / 698	–	–
B 2	4	Headed bush	Plastic	–	–	502 638

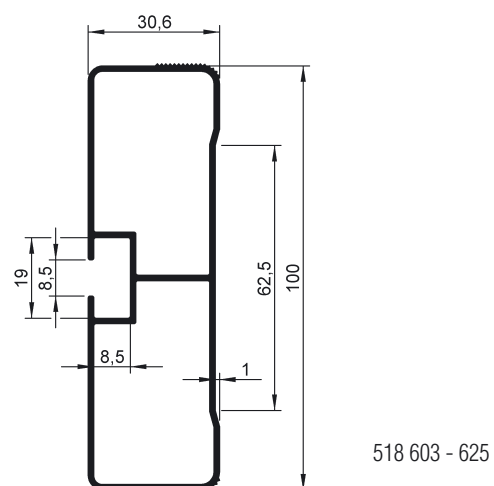
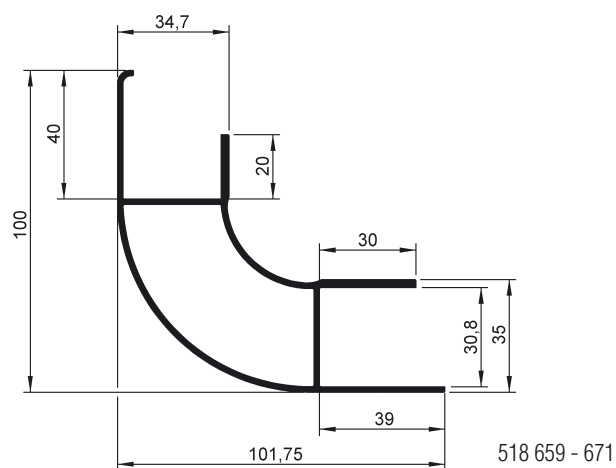
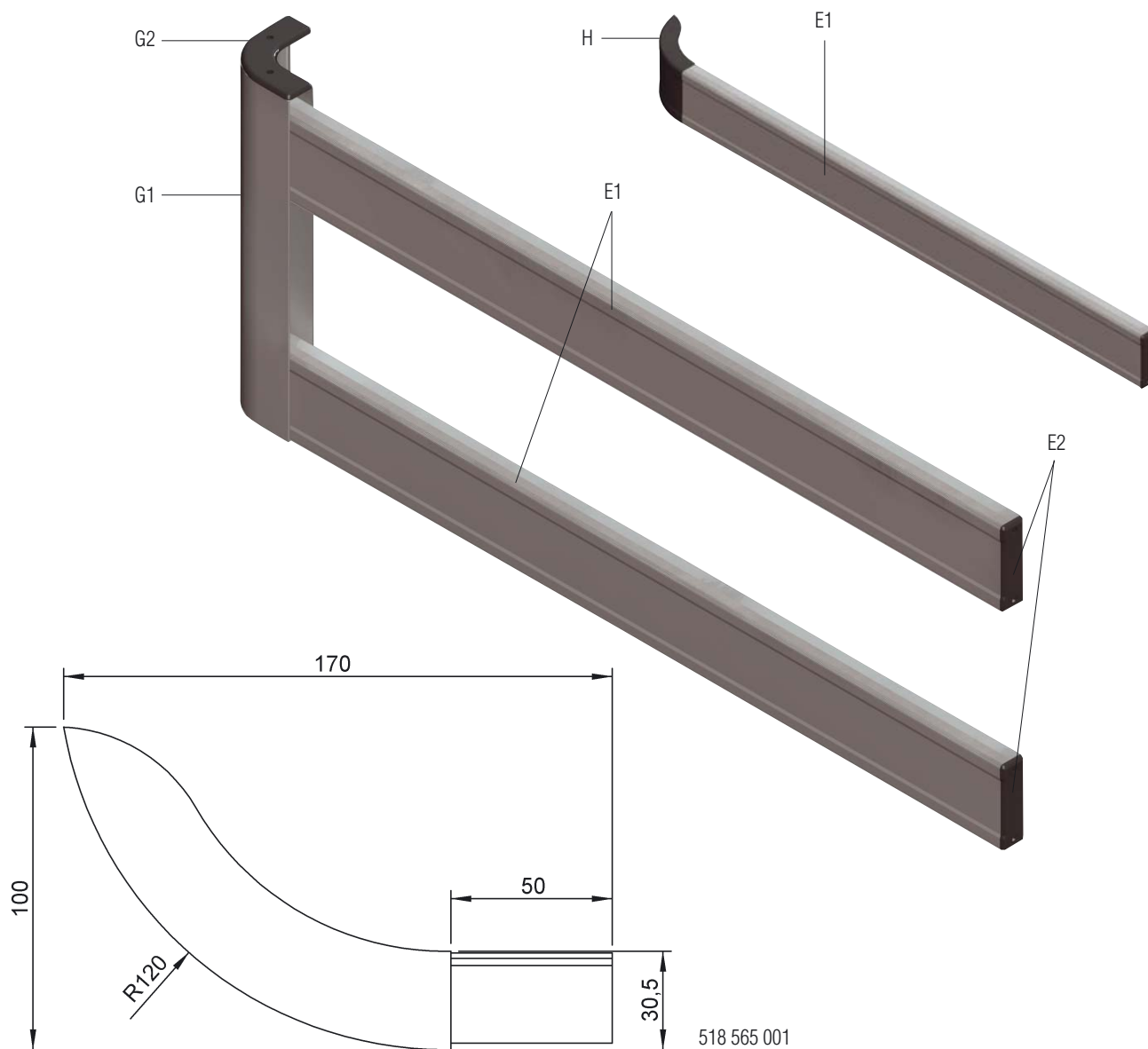
¹ Steel galvanized / Steel black powder coated

50.06.01.8

Construction elements

Side underrun systems

SIDELINE Rail components



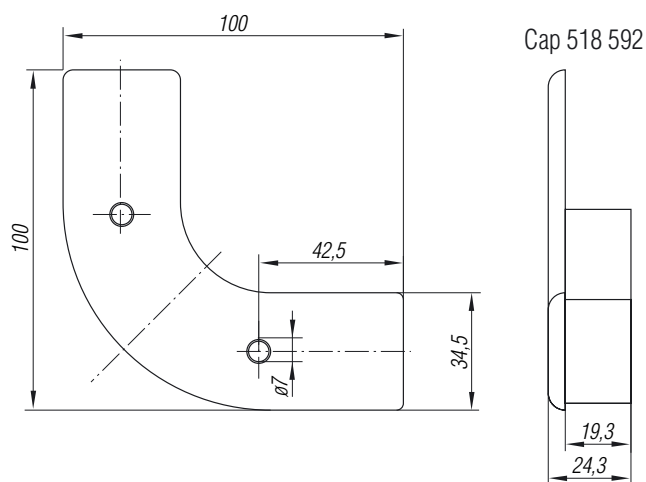
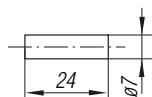
Technical specifications are for guidance only and without guarantee. Right to structural change reserved.

SIDELINE Rail components**Side-protection device for commercial vehicles**

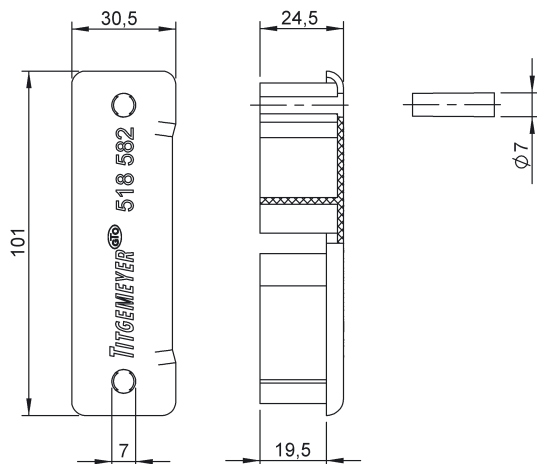
Rail components

Profiles

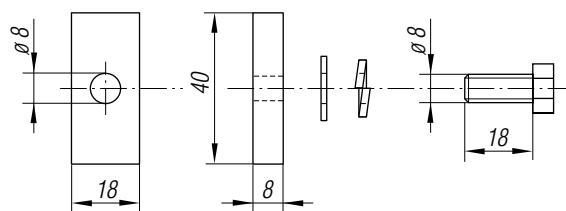
Position	[Quantity]	Description	Material	Dimensions [mm]	Norm	Weight [unit/kg]	Part No. mill finish	Part No. silver anodized	Part No. black anodized	Part No.
E 1	1	Rail section	Aluminium	3200	—	3.4	518 603	518 604	518 605	—
	1		Aluminium	3600	—	3.8	518 607	518 608	518 609	—
	1		Aluminium	4000	—	4.2	518 613	518 614	518 615	—
	1		Aluminium	5200	—	5.5	518 617	518 618	518 619	—
	1		Aluminium	6000	—	6.3	518 623	518 624	518 625	—
E 2	1	End caps	Plastic black	—	—	0.02	—	—	—	518 582 001
F	1	Fixing set	—	—	—	—	—	—	—	518 548
—	1	• Screwed plate (E)	Steel galvanized	40 x 18 x 8	—	—	—	—	—	518 546
—	1	• Hexagon screw (E)	Steel galvanized	M 8 x 18	EN 24017	—	—	—	—	—
—	2	• Washer (E)	Steel galvanized	8.4 x 17 x 1.6	EN ISO 7090	—	—	—	—	—
—	1	• Spring (E)	Steel galvanized	8.1 x 14 x 14 x 2.0	DIN 127	—	—	—	—	—
G 1	1	Radius profile	Aluminium	500	—	0.8	518 659	518 660	518 661	—
	1	Radius profile	Aluminium	5000	—	8.2	518 669	518 670	518 671	—
G 2	1	Cap	Plastic black	—	—	0.05	—	—	—	518 592
H	1	Radius section	Plastic black	—	—	0.3	—	—	—	518 565 001

Spare partPlastic pin for fixing end caps
518 582 and 518 592**Part No. 518 599**

End cap 518 582 001



Fixing set (Pos. F)

Part No. 518 548

SIDELINE Installation instructions**Protective Side guard for vehicles of the classes N2, N3, O3 and O4**

Instructions of installation according to the recommendations 89/297 EWG and § 32c StVZO

With effect from 01/01/92 all first registered vehicles and up to 01/01/94 at latest all vehicles to be conducted in the traffic of the above vehicle classes have to be equipped with protective side guard.

Special approvals may be given for:

- Semitrailer trucks, trucks for the transport of long, indecomposable goods (for example timber trucks and special trucks, concrete trucks), as well as vehicles which a protective Side guard cannot be built on for practical reasons.

The protective Side guard may consist of a continuous, plane surface, plank profiles or a combination of the two. The external surfaces have to be even, stable on the most essential parts, firmly installed at the vehicle and consist of metal or other appropriate material. Under usual conditions vibration etc. should not influence the well-seating of the protective side moulding on the vehicle. Add-on parts of the vehicle like fuel and air tanks and tool cases can be integrated as part of the protective Side guard provided their dimensions and characteristics comply with a.m. recommendations. It is not allowed to fix brake, air and hydraulic lines on the protective Side guard.

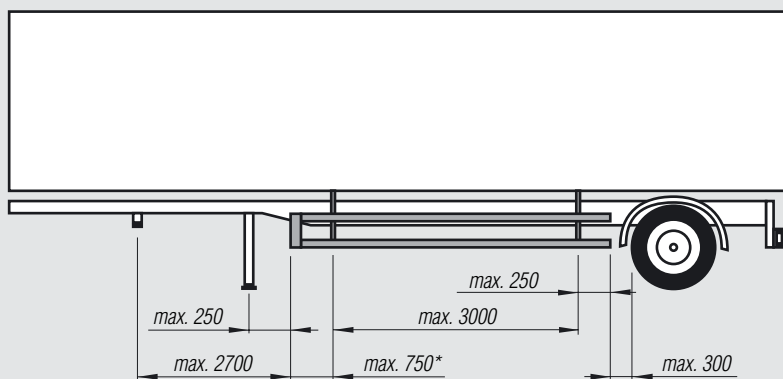
7. The surface of the deflector profiles must principally be even, but they may have for example reinforcing flanges and be interrupted by fasteners like screws or rivets which should not jut out more than 10 mm.
8. If the protective Side guard consists of more than one longitudinal profiles, there should not be more than 25 mm space between these elements. Overlappings, if necessary, should be made in driving direction.
9. Any elements of the protective Side guard directing to the outside have to be smoothed-off by at least R2,5.
10. The protective Side guard may consist of several deflector profiles mounted one below the other. Following minimum heights are required for the different vehicle classes:
N2 and O3: 50 mm
N3 and O4: 100 mm.
11. The deflector profiles have to be fixed well-seated. Hinged or detachable elements are allowed as far as they meet the requirements of stability.
12. The protective Side guard guarantees a max. deflexion of 150 mm at a test load of 1000 N. On the last 250 mm the deflection should be less than 30 mm. The test load has to be applied by a stamp of 210 to 230 mm diameter.

The installation should meet following requirements:

1. The protective Side guard must not pass over the outline of a vehicle.
2. The distance of the lower flange of the deflector elements to the road surface should be max. 550 mm.
3. The s.g.f. being installed inside of the outline of the vehicle, the distance between the surface of the deflector profile and the outline of the vehicle must not exceed 120 mm.
4. The protective Side guard extends over the area between the front and the rear axle of a vehicle. It begins max. 300 mm behind the front tyre profile and ends max. 300 mm in front of the rear tyre profile.
5. If the distance of 300 mm to the front tyre profile incorporates a part of the driver's cabin, the corner profile should begin directly behind it. Only for tilt or elastic mounted cabins an additional space of 100 mm is allowed. If the width of the driver's cabin exceeds the outline of the superstructure resp. the surface of the protective side moulding, the protective Side guard should be directed to the inside in an angle of 45 °.
6. If the corner profile begins at a position which would usually be open space and if the protective Side guard consists of more than one profiles, they have to be closed in the front area by vertical profiles of at least 100 mm thickness to the inside.

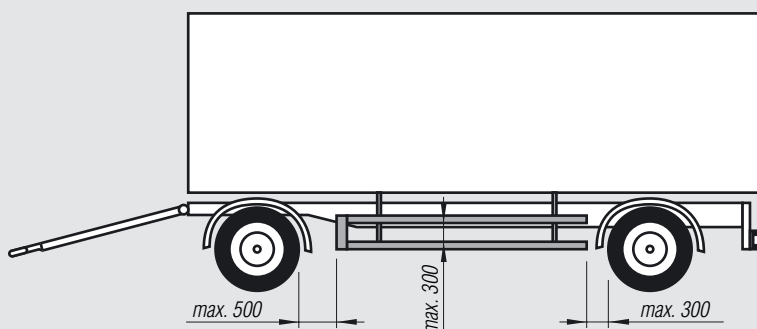
SIDELINE Installation instructions

Instructions for the installation of the protective side guard on vehicle classes O3 and O4 (trailers and semi trailers of more than 3,5 t up to 10 t gross weight rating or of more than 10 t gross weight rating).

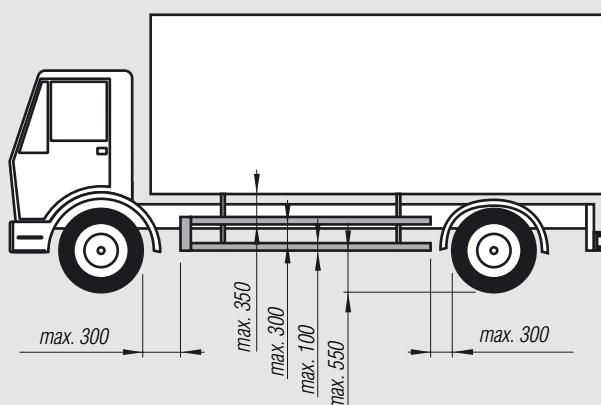


*max. 375 mm (VA-stainless steel)!

Instructions for the installation of the protective Side guard on vehicle classes O3 and O4 (trailers and saddle trailers of more than 3,5 t up to 10 t gross weight rating or of more than 10 t gross weight rating).



Instructions for the installation of the protective Side guard on vehicle classes N2 (trucks of more than 3,5 t up to 12 t gross weight rating) and N3 (more than 12 t gross weight rating).





TITGEMEYER (UK) Ltd
A2 Link One Industrial Park
George Henry Road
Tipton, West Midlands, DY4 7BU
Tel. 0121-557-9777
Fax. 0121-557-4777
sales@titgemeyer.co.uk
www.titgemeyer.co.uk