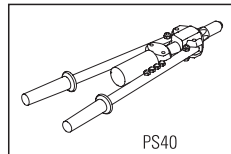
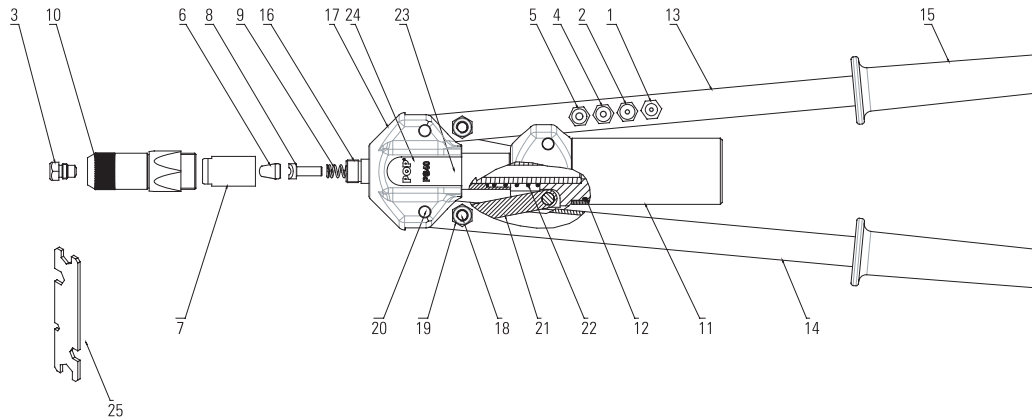
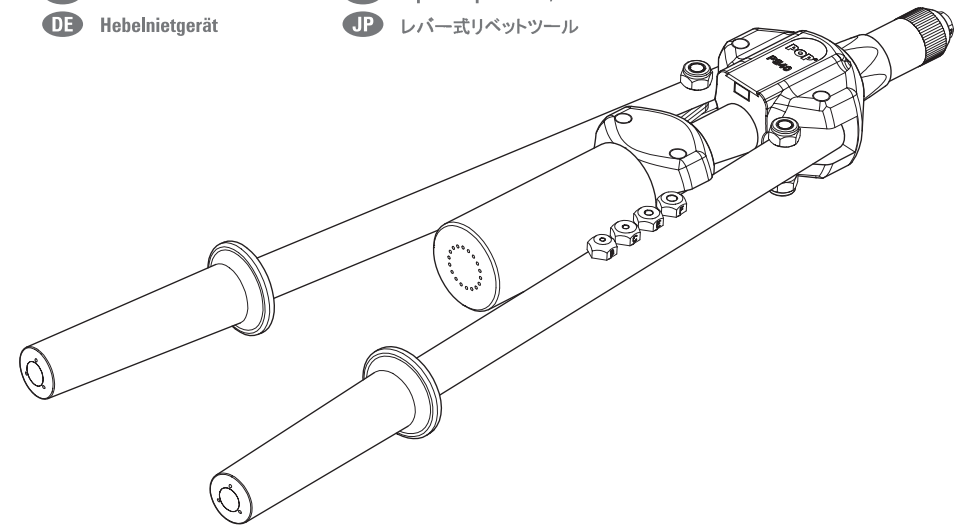


# POPSet™ PS40

# POP®

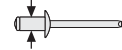





## Lever Rivet Tool

- |                                     |  |
|-------------------------------------|--|
| <b>ES</b> Remachadora de Palanca    | <b>SE</b> Handverktyg                              |
| <b>PT</b> Rebitadeira Tipo Alavanca | <b>DK</b> Tohåndstang til montering af blindnitter |
| <b>FR</b> Pince à leviers           | <b>FI</b> Vipuvarsihihit – 4,8 mm saakka           |
| <b>DE</b> Hebelnietgerät            | <b>JP</b> レバー式リベットツール                              |



1	DPM400-B10	1
2	DPM400-C10	1
3	DPM400-D10	1
4	DPM400-E10	1
5	DPM400-F10	1
6	FAM400-020	1
7	DPM400-018	1
8	DPM400-047	1
9	DPM400-024	1
10	FAM400-010	1
11	DPM400-113	1
12	DPM400-112	1
13	DPM400-221	1

14	DPM400-220	1
15	DPM400-120	2
16	FAM400-107	1
17	FAM400-103	1
18	DPM400-118	2
19	DPM400-119	4
20	DPM400-117	4
21	FAM400-116	2
22	DPM400-111	1
23	DPM400-114	1
24	DPM400-219	1
25	DPM400-129	1

Nosepiece	Part Number		
		Metric (mm)	Imperial (inch)
<b>B</b>	 <b>DPM400-B10</b>	3,0 - 3,2	1/8
<b>C</b>	 <b>DPM400-C10</b>	4,0	5/32
<b>D</b>	 <b>DPM400-D10</b>	4,8 - 5,0	3/16
<b>E</b>	 <b>DPM400-E10</b>	6,0	-
<b>F</b>	 <b>DPM400-F10</b>	6,4	1/4



- GB** Read the Manual  
**ES** Leer el Manual  
**PT** Leia o manual  
**FR** Lire le manuel  
**DE** Lesen Sie die Betriebsanleitung  
**SE** Läs manualen  
**DK** Læs manualen grundigt  
**FI** Kts. huolto-ohjeet  
**JP** 取扱説明書をお読みください。



- Wear Safety Goggles  
 Usar Gafas de Seguridad  
 Use Óculos de Proteção  
 Porter des lunettes de protection  
 Tragen Sie eine Schutzbrille  
 Använd säkerhetsglasögon (eller glasögon)  
 Anvend beskyttelsesbriller  
 Käytä suoja-silmälaseja  
 保護めがねを着用してください。

