

## SP30 Lockbolt Steel

Two piece swage lock fastening system consisting of a pin and collar. A versatile fastener due to its wide grip range, high speed assembly and uniform installed values. Excellent clamping force and vibration resistance. Available in steel and aluminium.

**Material:** Pin: Carbon Steel Collar: Low Carbon Steel

**Finish:** Zinc Plated



Pin Diameter (nom)	Part Code	Head Type	Hole mm	Grip Range mm	B (max) mm	E (max) mm
-----------------------	-----------	-----------	------------	------------------	------------------	------------------

4.8	SP90R-0610	90° CSK	5.0	1.60 - 16.0	9	45
-----	------------	---------	-----	-------------	---	----

6.4	SP90R-0810 SP90R-0820	90° CSK	6.6	1.60 - 16.0 7.90 - 32.0	12	50 65
-----	--------------------------	---------	-----	----------------------------	----	----------

6.4	SP30R-0810 SP30R-0824	Broad Truss	6.6	4.00 - 16.0 15.9 - 38.1	24	50 71
-----	--------------------------	-------------	-----	----------------------------	----	----------

9.5	SP30R-1232	Broad Truss	9.7	28.5 - 50.8	31	85
-----	------------	-------------	-----	-------------	----	----

Collar Diameter (nom)	Collar Type	Part Code	B (max) mm	C (max) mm
--------------------------	-------------	-----------	------------------	------------------

4.8	Standard Flange Wide Flange	SPCR-0600 SPCR-06WF	7.0 8.5	9.5 17.0
-----	--------------------------------	------------------------	------------	-------------

6.4	Standard Flange Wide Flange	SPCR-0800 SPCR-08WF	9.5 11.0	13.0 22.0
-----	--------------------------------	------------------------	-------------	--------------

9.5	Standard Flange	SPCR-1200	13.0	19.0
-----	-----------------	-----------	------	------

Diameter	Clamp KN	Shear KN	Tensile KN
----------	-------------	-------------	---------------

4.8	4.1	7.7	6.2
-----	-----	-----	-----

6.4	5.3	9.8	11.3
-----	-----	-----	------

9.5	14.2	18.7	25.0
-----	------	------	------

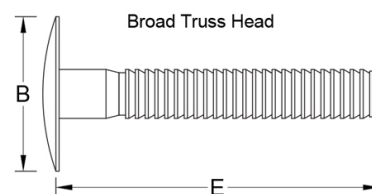
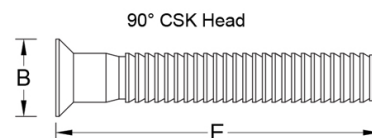
Detailed dimensions are available on request.

Dimensions and specifications are subject to change without notice. Check your distributor for the latest data sheet.

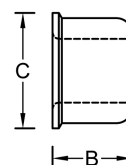
The test data provides approximate strength values averaged in multiple tests in various materials and thicknesses.

We recommend testing your application when an exact strength figure is required, or the load to be applied comes close to the published data.

UPDATED - NOVEMBER 2017



Standard  
Flange SPCR



Wide Flange

