

SP90/30 Lockbolt Aluminium

Two piece swage lock fastening system consisting of a pin and collar. A versatile fastener due to its wide grip range, high speed assembly and uniform installed values. Excellent clamping force and vibration resistance. Available in steel and aluminium.

Material: Pin: Aluminium 2024 Collar: Aluminium 6061

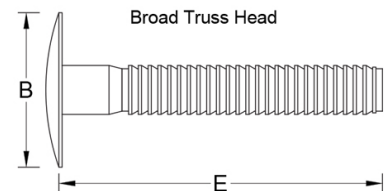
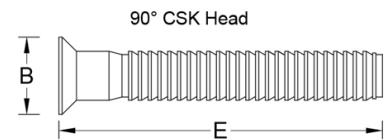
Finish: Natural



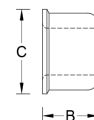
Pin Diameter (nom)	Part Code	Head Type	Hole mm	Grip Range mm	B (max) mm	E (max) mm
4.8 3/16"	SP90E-0610	90° CSK	5.0	1.60 - 16.0	9	45
6.4 1/4"	SP90E-0810 SP30E-0824	90° CSK Broad Truss	6.6	1.60 - 16.0 15.9 - 38.1	12 24	50 71

Collar Diameter	Collar Type	Part Code	B mm	C mm
4.8 3/16"	Standard Flange	SPCE-0600	7.0	9.5
6.4 1/4"	Standard Flange	SPCE-0800	9.5	13.0

Diameter	Clamp KN	Shear KN	Tensile KN
4.8 3/16"	2.4	3.3	4.0
6.4 1/4"	4.2	5.3	7.2



Standard Flange SPCF



Detailed dimensions are available on request.
 Dimensions and specifications are subject to change without notice. Check your distributor for the latest data sheet.
 The test data provides approximate strength values averaged in multiple tests in various materials and thicknesses.
 We recommend testing your application when an exact strength figure is required, or the load to be applied comes close to the published data.